



# OCWC News

Oklahoma City Woodcarvers Club

## 2013 Officers

Pres . . . . . Steve Brandt  
 V. Pres . . . . . Bill Dalke  
 Sec. . . . .  
 Treas . . . . . John Amicon

## STUFF YOU REALLY NEED TO KNOW ABOUT

**AUCTION:** John Amicon reports that our annual Club Auction brought in \$449.

**GARY BATTE:** There are a few openings left in the Gary Batte Woodcarving Seminar to be held immediately after our show. Please see Kent Wallace for details or to sign up.

**NATIVITY:** Pieces for the Nativity set have been disbursed and are being worked on. This is the same pattern set used last year but will not be painted. The set will have a natural finish to it this year that should look very nice. Turn completed carvings in to Kent Wallace as soon as possible. . .all should be finished by August so that the set can be displayed at the State Fair for raffle ticket sale.

**CLUB SECRETARY:** Barbara Hataway has accepted the position as interim secretary.

**POLITICS:** There's another move to place the Arts Council and it's funding under the tourism dept. with adverse effects and decreases in support of all the Arts and art education in the state. Please send an email to your legislator asking for continued support and against this move to tourism. Our show could be in jeopardy if the funds we receive are cut.

**LES STOTLER:** A donation will be sent on behalf of the club in memory of Les Stotler after his recent passing. Les was a member of the club for many years and was active in getting people to display their work at the State fair.

*(Continued on column 1, page 2)*

## Carver's Origin Traced

*(Reprint from February, 2002, News)*

The original drawing of the woodcarver on a stool was done by Oklahoma City artist Ernie



Craig who worked at the Oklahoma Publishing Company. Jim Anderson (long time member now deceased) has known and worked with Ernie Craig for many years going back before the subject drawing. Jim reported that Ernie

Craig has given the Oklahoma Woodcarvers Club permission to use the figure in its Club activities and promotions.

The drawing has been used for the many promotional efforts for the OCWC's Annual Woodcarvers Show dating back to the late 1960's. Additionally, many variations of the original drawing have been produced for special purposes. It has been on the cover of the OCWC Show brochure for over thirty years. The newsletter has used it on numerous occasions and the club has produced lapel pins that include some added color.

While this figure has been used extensively over the years to promote OCWC and its Annual Show, it has no official status as an emblem of the Club. The Club's official emblem, as recognized by the By-Laws, is OCWC formed

*(Continued on column 1, page 2)*

(continued from page 1)

## Carver's Origin



into a circle. Since the two emblems have been

used so extensively over the years, the woodcarver certainly has a very strong unofficial standing with the Oklahoma City

Woodcarvers Club thanks to Ernie Craig. Every member should remember him and we all offer a big "Thank You" to Ernie.

### Footnote:

1. The emblem and the carver are currently being used on coffee cups (for sale through club officers) and on clothing such as shirts, jackets, and vests.

2. Current (2010) By-Laws do not identify an official club logo or emblem.

(continued from page 1)

## MORE Stuff You Need to Know

**CARVING SHOWS:** **Tulsa Show** is June 10 and 11, from 10 to 5 at the Union school Activity Center. That is a Friday and Saturday.

**WICHITA, KANSAS,** Woodcarving Show will be on May 14 & 15 at the Cessna Activity Center, 2744 S. George Washington Blvd. This is their 50<sup>th</sup> annual show.

**SICK LIST:** **Barbara Hataway** is ready to have some work done on her knees so she will be laid up for a bit. Likewise, **Jerry Wooliver** is still going through knee surgery, too. He should be back to full speed in a few weeks. **Earl Cox** is recovering from hand surgery and other complications, but he is back carving with us on Monday afternoons. We hope he will be back to full strength very soon, also. **Pat Priest** made a quick trip to the emergency room but was soon reported to be up and going again.

(continued in next column)

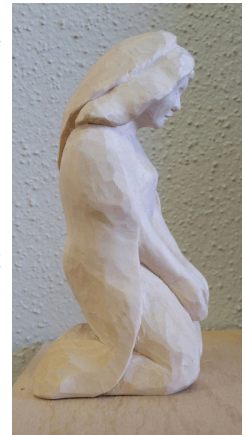
**REFRESHMENTS:** **Bill Dalke** and **David Koelsche** will be providing refreshments for the May Meeting.

**DOOR PRIZE:** **Jim Studebaker** will provide the door prize this month.

**NEXT BOARD of DIRECTORS MEETING:** Wednesday morning, May 18<sup>th</sup> at Woodson Park, 10:00 AM.

## This Year's Nativity Set

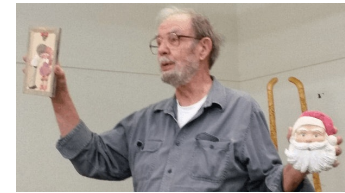
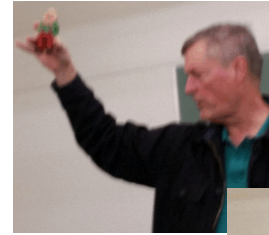
If you read last month's newsletter you already know we are preparing another Nativity Set for this year's raffle during the Show. This set will have a natural finish so we will have one person apply the finish coat rather than everyone doing their own thing. The pattern is the same as last year's and if you have not selected a piece to carve, do so at this month's meeting. The carving of Mary has already been turned in to Kent Wallace along with a few others. It will be great to have it completed by August so we can use it to help getting the word out about our Annual Show.



## SHOW AND TELL

At the close of last year, we had very poor participation in Show & Tell; however, for the past two months things are looking up. Pete Zachry offers his apologies for not having acceptable photos to show. He makes no claim to being proficient with a cell phone camera. Hand shaking is really hard on focus quality when using a phone camera. He vows to bring his regular camera this month. *Please keep the Show & Tell items coming. This is really important.*

## SHOW & TELL



## Fifteen Years Ago

A lot of new things were happening in 2001 including a change in the way club meetings were conducted. Seating had previously been at tables where various groups would gather; however, starting in 2001 seating was in an auditorium style which is still in use currently. Another big change was moving the Annual OCWC Show from Quail Springs Mall to the Midwest City Civic Center where we were able to have a fee for those coming to the show. This helped a great deal; however, because of the change in football conferences we were unable to avoid the conflict with the Oklahoma-Texas football game on Saturday. Purchase awards totaled over \$1000 at the show.

Two new "Honorary Members" were named and given life membership. (By-Laws now do

not allow for life membership.) Jim Crist and Ron Schessl were the last two members to receive this honor.

To end the year, OCWC was invited to take part in the opening of the Sam Noble Oklahoma Museum of Natural History at the University of Oklahoma. The opening exhibit featured the "Wood on the Wing" collection of prize winning bird carvings from the Best of Gulf South Award from the Annual Louisiana Wildfowl Carvers Festival. Phillips Petroleum Company has been purchasing the winning entry of this prestigious competition to become a permanent collection to stimulate concern for the nation's wildlife and their habitats.

## MAY PROGRAM

### LET'S CARVE AN EAR

#### *the right way*

A great many carvers have wrong ideas just how an ear is to look. This month we will review the principles of carving an ear correctly. This will be an exercise in doing a realistic ear, how it is shaped, just where it is located, and the major features that make it come out right.

#### Membership and Meetings

**Membership** is open to individuals who are interested in woodcarving or the promotion of woodcarving. Annual dues are \$24.00 per family.

**General Meetings** are held on the second Monday of each month (except September) at the City Arts Center, 3000 Pershing Blvd., on the State Fair Grounds, Oklahoma City, at 7:00 PM. Visitors are always welcome. Refreshments are provided by Club members.

**News Letter** is published each month and mailed or emailed to all members during the first week of each month. Anyone having news of interest to the membership or having an announcement relating to the Club or woodcarving should contact the Editor prior to the last day of the month. Articles are welcome from all members and can be emailed or called to the editor.

### Woodcarvers Officers

*President*  
**Steve Brandt**  
 464-2066

*Vice President*  
**Bill Dalke**  
 360-1537

*Treasurer*  
**John Amicon**  
 830-5634

*Editor*  
**Barbara Hataway**  
 348-5681  
 bhataway@cox.net



*John Amicon*  
 504 Country Lane  
 Midwest City, OK 73130